

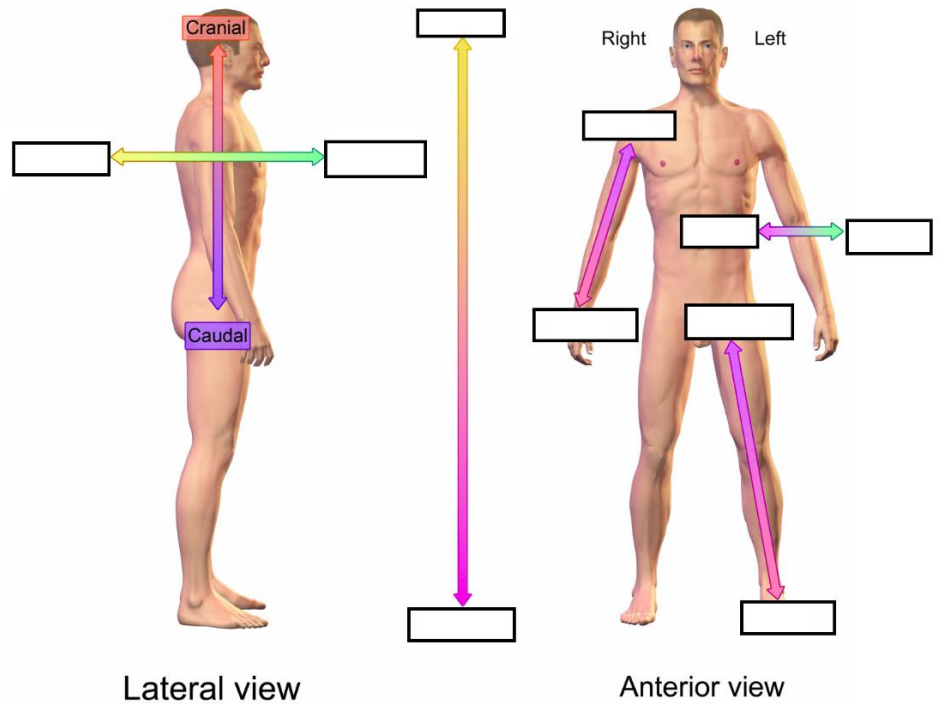
Chapter 2: The Human Body

Define the following terms and fill them into the diagram. Some will be used more than once.

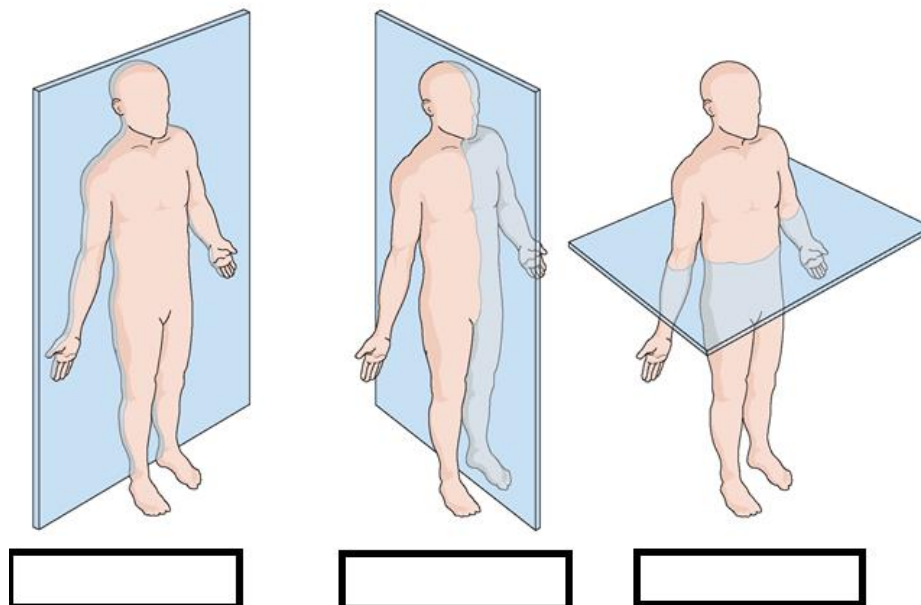
1. Superior (Cranial):
2. Inferior (Caudal) :
3. Anterior (Ventral):
4. Posterior (Dorsal):
5. Medial:
6. Lateral:
7. Proximal:
8. Distal:

Define the following:

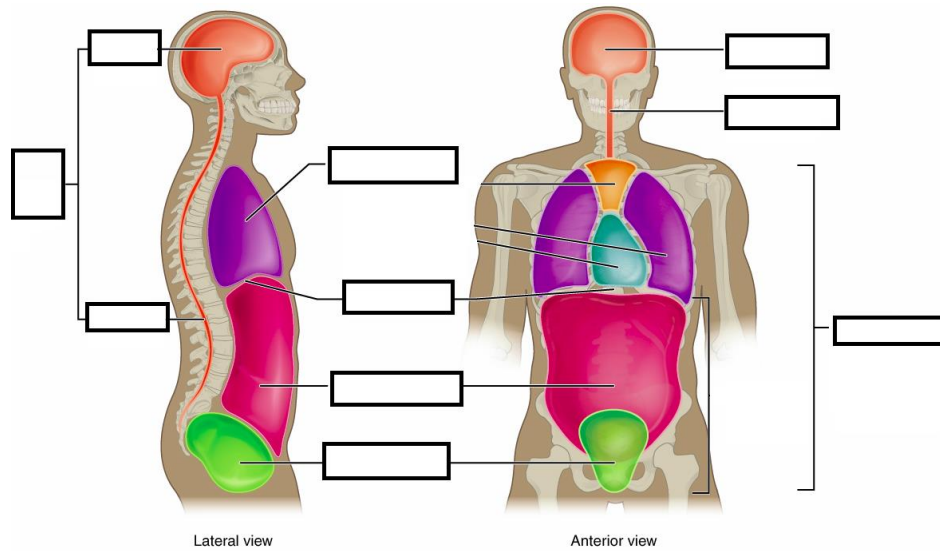
1. External:
2. Internal:
3. Superficial:
4. Deep:
5. Central:
6. Peripheral:



Label the three planes shown on the diagram



Label the body cavities shown



Complete the following

1. Complete the “Test Your Knowledge 2-1” questions below. Page 26

| | | |
|---|--|----------------------------------|
| 1 | Try standing in the actual anatomical position | |
| 2 | Give the best body position (Prone, Supine, or Fowler's) for the following circumstances: | Best Body Position |
| | A - Getting a back massage | |
| | B - Eating in a hospital bed | |
| | C - Watching television in bed | |
| | D - Watching the stars at night | |
| 3 | Give the opposite directional term: | Opposite Directional Term |
| | A - Superior | |
| | B - Posterior | |
| | C - Caudal | |
| | D - Ventral | |
| | E - Distal | |
| | F - External | |
| | G - Superficial | |
| | H - Peripheral | |
| | I - Medial | |

| Fill in the Blanks: | |
|----------------------------|---|
| 4 | A scratch on the surface of the skin is called a(n) _____ wound. |
| 5 | The wrist is _____ to the hand and _____ to the elbow. |
| 6 | The nose is _____ to the mouth. |
| 7 | If your hands and feet are swollen with fluid (edema), you are said to have _____/_____ edma. |
| 8 | A blue coloration of the inside of the mouth indicates _____. |

2. Complete the “Test Your Knowledge 2-2” questions below. Page 29

| Fill in the Blanks | |
|---------------------------|---|
| 1 | The plane that divides the body into superior and inferior regions is called the _____/_____ plane. |
| 2 | The frontal plane divides the body into _____ sections. |
| 3 | Cutting an organ into two equal halves (right and left) requires a(n) _____ incision. |
| 4 | Identify the major body cavity in which the following organs are located: |
| | Major Body Cavity |
| | A - Heart |
| | B - Spinal Cord |
| | C - Stomach |
| | D - Lungs |
| | E - Reproductive Organs |
| | F - Brain |
| Fill in the Blank | |
| 5 | The dorsal body cavities house organs from this system _____. |

3. Complete the “Test Your Knowledge 2-3” questions below. Page 35

| Fill in the Blanks | |
|---------------------------|--|
| 1 | People who chew smokeless tobacco or snuff are more susceptible to _____ cancer. |
| 2 | Antiperspirant sprays are usually used in the _____ region. |
| 3 | Belly button rings are usually found in the _____ region. |
| 4 | If you sit too long at your desk, you can develop _____ pain. |
| 5 | During physicals, your reflexes are checked with a little rubber hammer that taps your _____ region. |

6 A patient presents with left upper quadrant pain after a car accident. This type of pain may indicate injury to the _____ or _____.

Review Questions:

Multiple Choice:

- 1.
- 2.
- 3.
- 4.
- 5.
- 6.

Fill in the Blanks

1. -
2. -
3. -
4. -
5. -
6. -

Short Answer

1. -
2. -
3. -