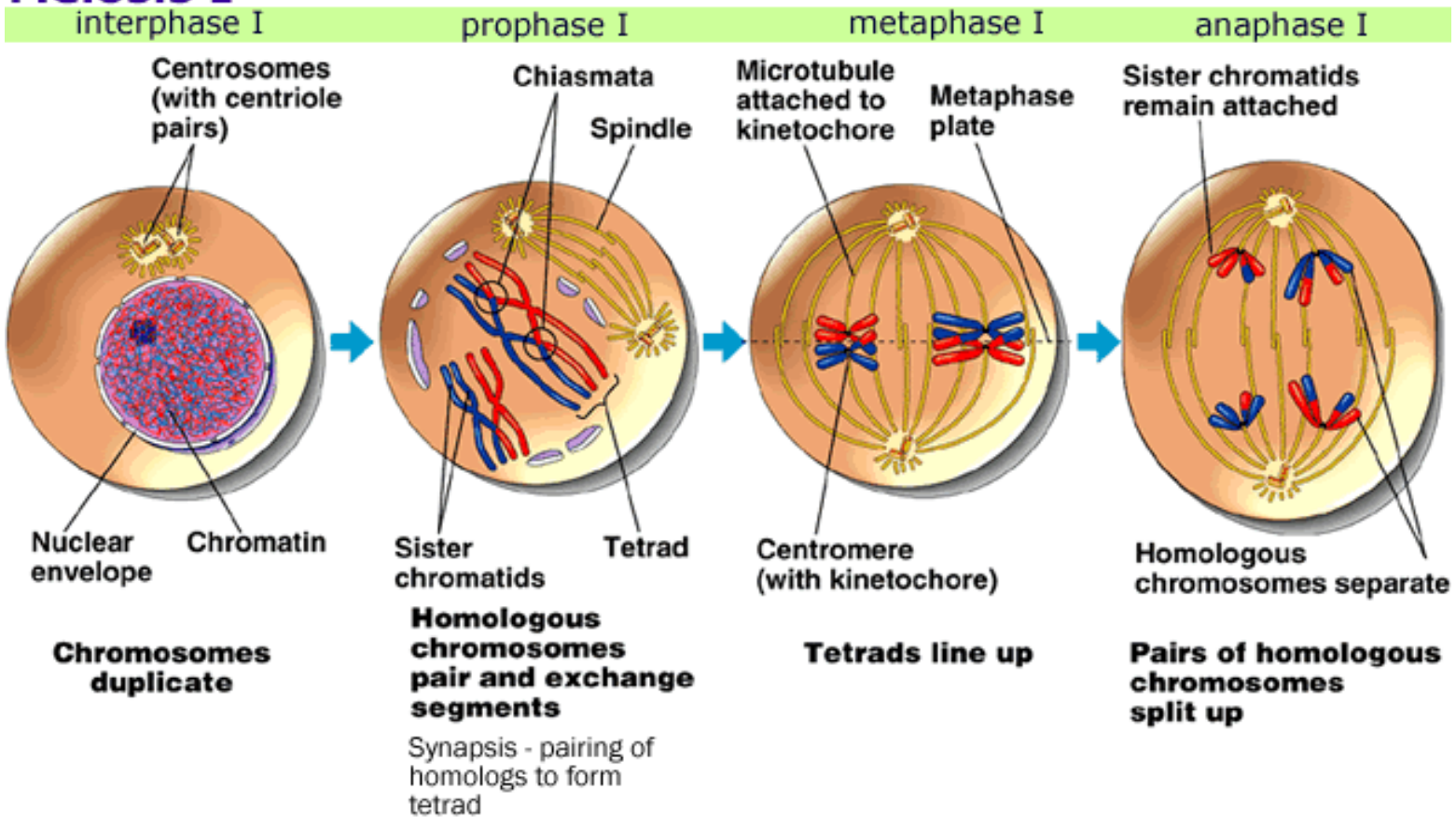


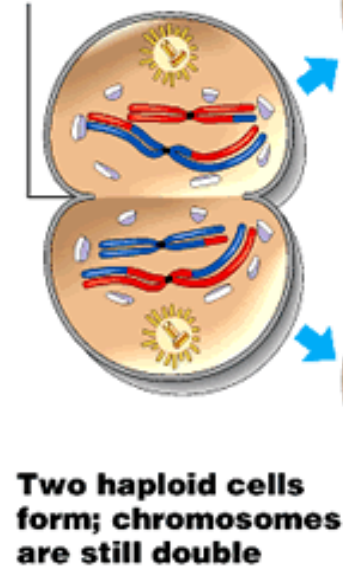
Meiosis I



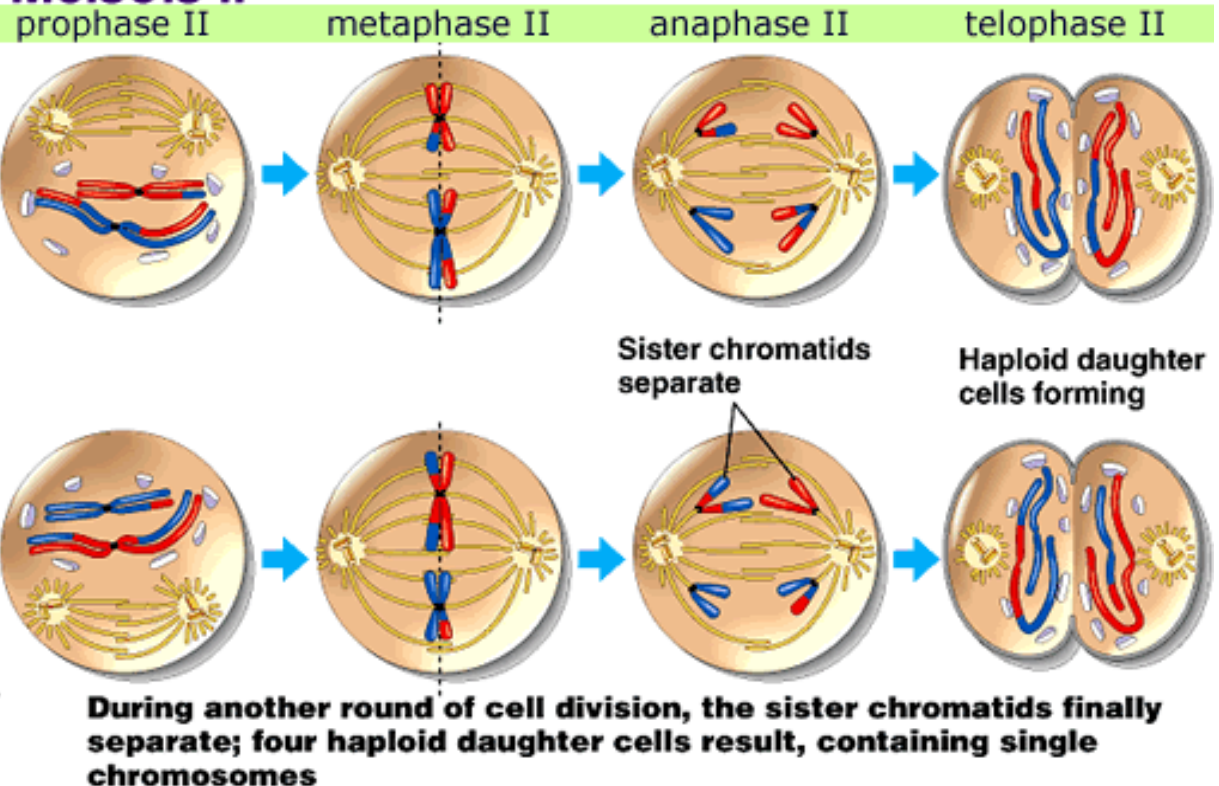
Meiosis I

telophase & cytokinesis

Cleavage furrow



Meiosis II



Meiosis Assignment

Name _____

1. Label the stages of meiosis.

- | | | |
|----|----|----|
| A. | B. | C. |
| D. | E. | F. |
| G. | H. | I. |

2. What important event is taking place in stage A?

3. Label the following.

- | | | |
|----|----|----|
| J. | K. | L. |
|----|----|----|

4. What important event is taking place in stage B?

5. What is the chromosome number for the cell in stage B? (haploid or diploid)

6. Label the following.

- | | | | |
|----|----|----|----|
| M. | N. | O. | P. |
| Q. | R. | S. | |

7. Describe the event that takes place in stage D.

8. Label the following.

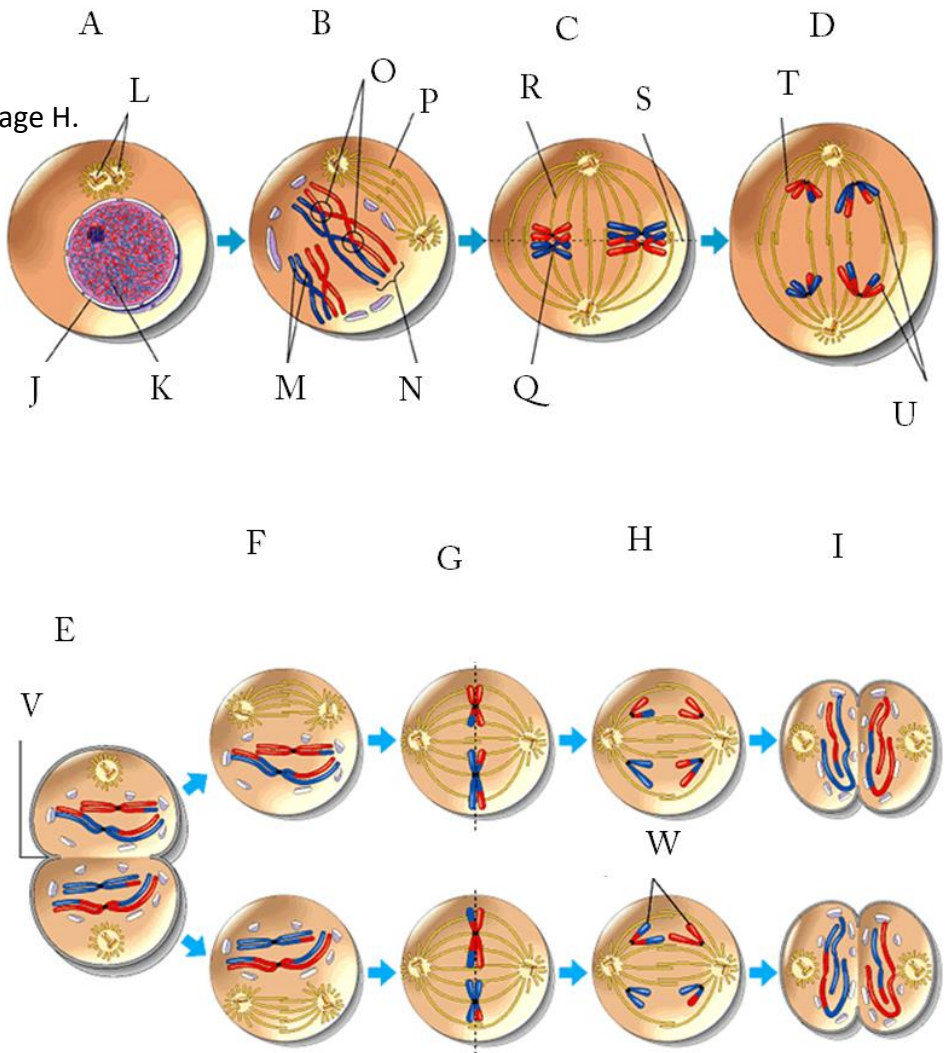
- | | |
|----|----|
| T. | U. |
|----|----|

9. What is the chromosome number for the cell in stage E? (haploid or diploid)

10. Label the following.

- V.
W.

11. Describe the event that takes place in stage H.



Meiosis Assignment

KEY

1. Label the stages of meiosis.

A. interphase

B. prophase I

C. metaphase I

D. anaphase I

E. telophase I

F. prophase II

G. metaphase II

H. anaphase II

I. telophase II

2. What important event is taking place in stage A?

The chromosomes are replicating.

3. Label the following.

J. nuclear membrane

K. chromatin

L. centriole pair

4. What important event is taking place in stage B?

Exchanging of segments AKA crossing over

5. What is the chromosome number for the cell in stage B? (haploid or **diploid**)

6. Label the following.

M. sister chromatids

N. tetrad

O. chiasmata

P. spindle

Q. centromere

R. microtubule

S. metaphase plate

7. Describe the event that takes place in stage D.

Homologous chromosomes separate

8. Label the following.

T. sister chromatid

U. homologous chromosomes

9. What is the chromosome number for the cell in stage E? (**haploid** or diploid)

10. Label the following.

V. cleavage furrow

W. separated sister chromatids

11. Describe the event that takes place in stage H.

sister chromatids separate

